

REVISIONS				
REV	DESCRIPTION	DRF	APP	DATE
06	PER ECO P236	VM		10-23
07	PER ECO P248	PO		03-28-95

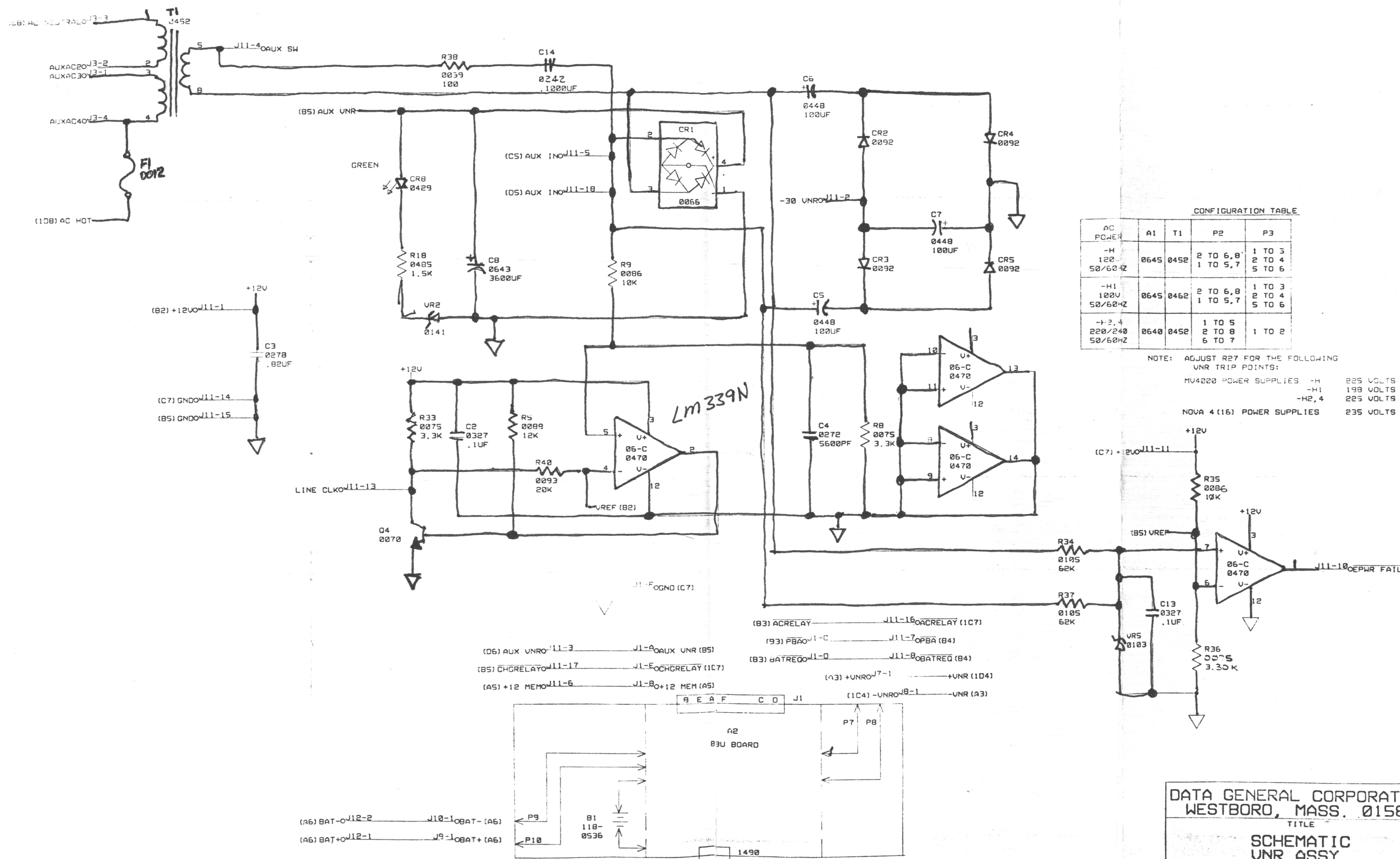
- (A4) FANAC J2-5 — J12-8 OF FANAC1 (A4)
- (A4) FANAC J2-6 — J12-7 OF FANAC2 (A4)
- (A4) FANAC J2-7 — J12-6 OF FANAC3 (A4)
- (A4) FANAC J2-8 — J12-5 OF FANAC4 (A4)

ARTWORK: 107-1795		DRAWN BY: A. BLODGETT	
ARTWORK VS SCHEMATIC		CHECKED:	
REV	SCHEMATIC REV(S)	ENGINEER	J. KOCIECKI
00	00, 01, 02, 03, 04	APPROVED	
01	05	FIRST USED ON	005-10434
02	06, 07		005-18311

DATA GENERAL CORPORATION				
WESTBORO, MASS. 01580				
TITLE				
SCHEMATIC UNR ASSY.				
SIZE	CODE	DRAWING NUMBER	REV	SHEET
0	001	003105	07	1 OF 2

SOURCE FILE: BOXCAR.06 LAST UPDATED: 01/21/03

THIS DRAWING AND SPECIFICATIONS HEREIN ARE THE PROPERTY OF DATA GENERAL CORPORATION AND SHALL NOT BE REPRODUCED OR USED IN WHOLE OR IN PART AS THE BASIS FOR THE MANUFACTURE OR SALE OF ANYTHING WITHOUT WRITTEN PERMISSION



CONFIGURATION TABLE

AC POWER	A1	T1	P2	P3
-H 120 50/60HZ	0645	0452	2 TO 6,8 1 TO 5,7	1 TO 3 2 TO 4 5 TO 6
-H1 100V 50/60HZ	0645	0452	2 TO 6,8 1 TO 5,7	1 TO 3 2 TO 4 5 TO 6
+2,4 220/240 50/60HZ	0640	0452	1 TO 5 2 TO 8 6 TO 7	1 TO 2

NOTE: ADJUST R27 FOR THE FOLLOWING UNR TRIP POINTS:
 MV4000 POWER SUPPLIES -H 225 VOLTS
 -H1 198 VOLTS
 -H2,4 225 VOLTS
 NOVA 4 (16) POWER SUPPLIES 235 VOLTS

- (B3) ACRELAY J11-16 ACRELAY (1C7)
- (93) PBA01-C J11-7 OPBA (B4)
- (B3) BATREQ0 J11-0 J11-8 OBATREQ (B4)
- (A3) +UNRO J7-1 +UNR (104)
- (1C4) -UNRO J8-1 UNR (A3)
- (D5) AUX UNRO J11-3 J1-A O AUX UNR (B5)
- (B5) CHGRELAY J11-17 J1-E O CHGRELAY (1C7)
- (A5) +12 MEMO J11-6 J1-B O +12 MEM (A5)

- (A6) BAT-O J12-2 J10-1 OBAT- (A6)
- (A6) BAT+O J12-1 J9-1 OBAT+ (A6)

DATA GENERAL CORPORATION
 WESTBORO, MASS. 01580

TITLE
 SCHEMATIC
 UNR ASSY.

SIZE	CODE	DRAWING NUMBER	REV	SHEET
D	001	003105	07	2 OF 2

SOURCE FILE BOXCAR.06 LAST UPDATED 01/11/83