

SUPPORT BULLETIN

SKM subsystems

#29

2/26/92

Status: Action required
Subject: Mounting of *differential* WREN-5 (601MB) and WREN-RUNNER (330MB) disk drives in SKM enclosures
ECO#: 1939
Assemblies: SKM enclosures (Trimm Industries models DA60-D1R, DA60-D2R and DA60-D3R)
Revisions: N/A
S/Ns: N/A

Situation:

Zetaco has utilized three different versions of Trimm Industries' model DA60 enclosures in SKM subsystems. These versions are identified as follows:

DA60-D1R: U.S. voltage 50 watt power supplies
DA60-D2R: European voltage 50 watt power supplies
DA60-D3R: Universal auto-ranging 50 watt power supplies

The DA60-D3R is the version currently integrated by Zetaco. The DA60-D__R version can be identified by reading the label on the back of the enclosure.

Installing drives in DA60-D1R and DA60-D2R enclosures:

When installing Seagate ST4702ND and/or ST4385ND *differential* disk drives, *attach them to the forward most position on the drive tray. These disk drives have extended interface PC boards which will not fit if the drives are not mounted properly.*

Installing drives in DA60-D3R enclosures:

In addition to the above mounting requirement for ST4702NDs and ST4385NDs, the power connectors for the rear slots in the DA60-D3R must be modified to allow room for the extended interface PC boards on these disk drives. The power connector must be notched out with a Dremel or other appropriate tool in order to allow the wires to be bent at a 90° angle and exit the connector from the *top* side rather than the back side (see figures 1 and 2).

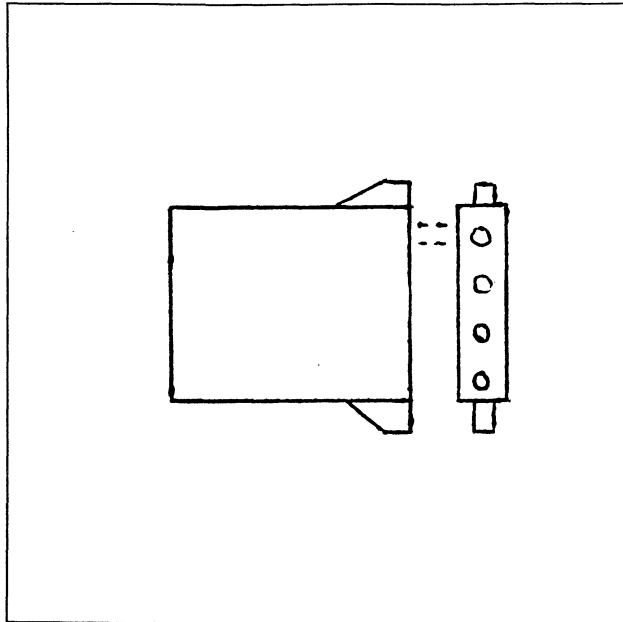


Figure 1
Unmodified power connector
(will not allow installation)

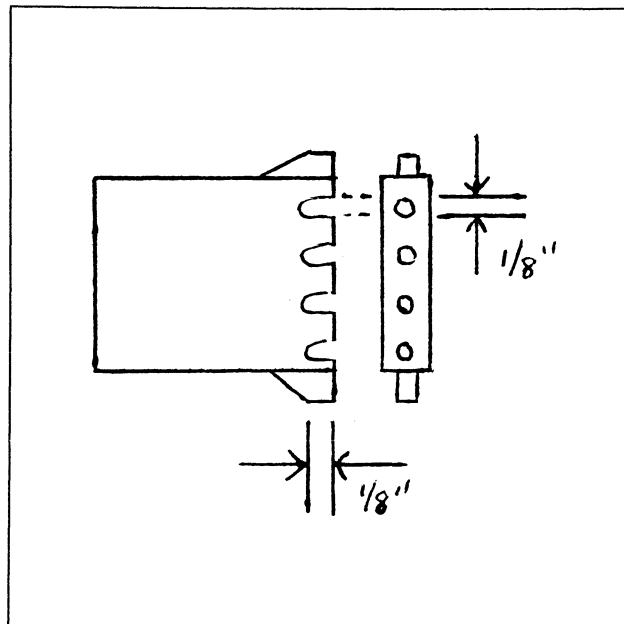


Figure 2
Modified power connector
(will allow installation)

All Zetaco SKM enclosures shipped after March 5th, 1992, will have modified rear power connectors for ST4385ND and ST4702ND disk drive support.

System Impact:

You will achieve successful installation of ST4385ND and/or ST4702ND disk drives in SKM enclosures only if the above requirements are met.

Disk drive identification:

The WREN disk family has been manufactured by several companies since the first generation. The current manufacturer is Seagate. These drives may be identified by the following manufacturers and model numbers:

<u>Disk type</u>	<u>CDC P/N</u>	<u>Imprimis P/N</u>	<u>Seagate P/N</u>
WREN-5	94181-702D	94181-702D	ST4702ND
WREN RUNNER	94181-385D	94181-385D	ST4385ND

Action Required:

Be aware of the above ST4702ND and ST4385ND installation requirements. Plan to modify the rear power connectors in older DA60-D3R enclosures accordingly.

Another option:

The maximum cumulative (paddleboard to bulkhead + external + internal enclosure) cable length for a *Single Ended* SCSI subsystem is 19 feet. If your cabling requirements don't exceed 19 feet, you may use ST4385N and/or ST4702N single ended disk drives without power connector modification. This does not apply to add-on drives for an existing differential SCSI subsystem.